

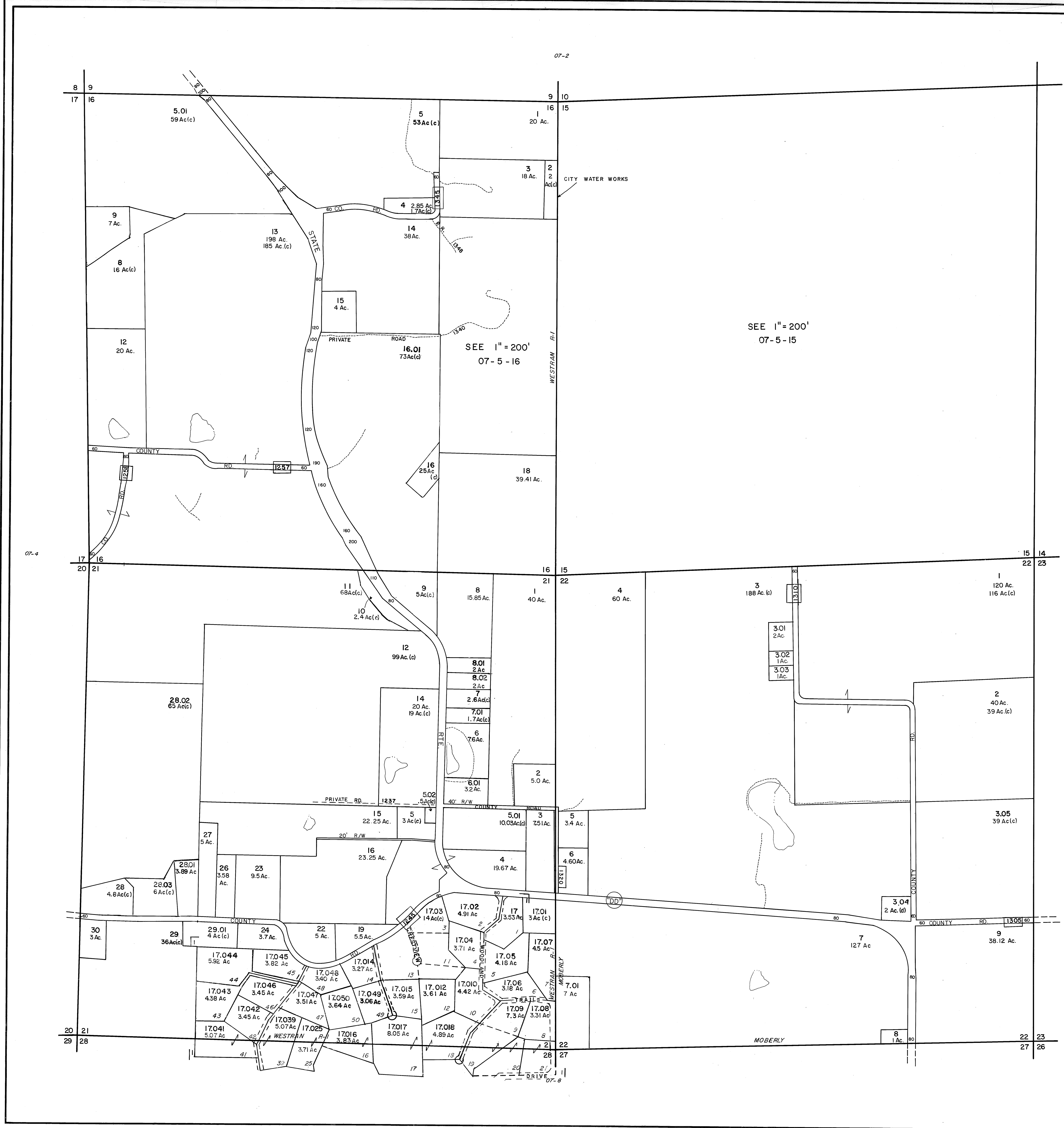
PLAN HOLD CORPORATION - IRVINE, CALIFORNIA  
RECORDED BY NUMBER 07548  
FURTHER SCALE OF PART OF THE LINE

PLAN HOLD CORPORATION - IRVINE, CALIFORNIA  
RECORDED BY NUMBER 07548  
FURTHER SCALE OF PART OF THE LINE

PLAN HOLD CORPORATION - IRVINE, CALIFORNIA  
RECORDED BY NUMBER 07548  
FURTHER SCALE OF PART OF THE LINE

PLAN HOLD CORPORATION - IRVINE, CALIFORNIA  
RECORDED BY NUMBER 07548  
FURTHER SCALE OF PART OF THE LINE

PLAN HOLD CORPORATION - IRVINE, CALIFORNIA  
RECORDED BY NUMBER 07548  
FURTHER SCALE OF PART OF THE LINE



OWNERSHIP MAP  
**RANDOLPH COUNTY, MISSOURI**  
 PREPARED UNDER THE DIRECTION OF  
**STATE TAX COMMISSION OF MISSOURI**  
 AND  
**RANDOLPH COUNTY TAX ASSESSOR**  
 PREPARED BY  
**ROBINSON AND ASSOCIATES, INC.**  
 306 OAK AVE., SPRUCE PINE, N.C. 28777

SCALE: 1" = 400'  
 DATE OF MAP MARCH 23, 1981  
 DATE OF PHOTOGRAPHY 1978  
 AERIAL PHOTO NO. 178-39-1

**SUBDIVISION INDEX**

SUBD. NO.	SUBDIVISION NAME	PLAT BOOK	PAGE
1	WOODLAND TRAILS	258	C&D

**LEGEND**

STATE LINE	---	AREA (FROM DEED)	10.5Ac.
COUNTY LINE	---	AREA (CALCULATED)	10.5Ac.(c)
CORPORATION LINE	---	DIMENSION (FROM DEED)	16.5
DISTRICT LINE	---	DIMENSION (CALCULATED)	66'(s)
ROAD R/W	---	SUBDIVISION LOT NUMBER	23
TOWNSHIP & RANGE LINES	---	PARCEL NUMBER	45
RAILROAD R/W	---	WATER	---
PROPERTY LINE	---	INTERSTATE HIGHWAY	55
LAND HOOK	---	U.S. HIGHWAY	66
SECTION LINE	---	STATE HIGHWAY	3
INTERIOR OR ORIGINAL TRACT LINE	---	COUNTY HIGHWAY	33
BLOCK LIMIT (WHERE APPLICABLE)	---	ROADS, STREETS, CHURCHES, ETC. BY NAME	2   11
		SECTION CORNERS	1   12

**MAP SHEET INDEX**

6	5	4	3	2	1
03	02	01	01	12	
7	8	9	10	11	12
18	17	16	15	14	13
04	05	06	06	23	24
19	20	21	22	23	24
30	29	28	27	26	25
09	08	07			
31	32	33	34	35	36

**TOWNSHIP LOCATOR**

	R16W	R15W	R14W	R13W
T55N	04	03	02	01
T55N	04	03	02	01
T54N	05	06	07	08
T54N	05	06	07	08
T53N	12	11	10	9
T53N	12	11	10	9
T52N	13	14	15	16

SECTIONS 16, 21, 22  
 TWP. 54 N. RNG. 14 W.  
 33-07-5-  
 MAP NUMBER

REVISIONS

DATE	BY	CHANGES OR ADDITIONS